

Apparatus Flagpole

Display your flag proudly with the new Fire Fighter Patriot Flagpole. This polished stainless steel pole is designed to provide a permanent flag mount on fire apparatus and other vehicles. *Ship. wt. 2 lbs.*



AS702	Flagpole	\$118.95
L897	3'x5' Nylon U.S. Flag	\$23.95

Use Skull Savers Don't Risk Ladder Injuries

Walking into the heel of a ladder is always painful and extremely dangerous. Skull Saver is easily visible and cushions any contact. Slight tug opens the Velcro® fastener, closes with finger pressure. Stays on in high winds, rain, or ice. Includes extra strap for permanent attachment to apparatus. *Contact us for pricing on custom sizes. Ship. wt. 6 lbs.*



AW345



R891	Single Leg 4"Hx9"Wx5"D	\$54.95
R891XA	Super (A)* 23"Hx9"Wx8"D	\$93.95
R891XB	Super (B)** 22"Hx5"Wx8"D	\$93.95
U697	Super Duper 27"Hx12"Wx8"D	\$108.95
AW345	USA Flag 23"Hx9"Wx8"D	\$93.95
AW346	USA Flag 27"Hx12"Wx8"D	\$108.95

*Super (A) model is for two-section ladders made after June 1984.

**Super (B) model is for two-section ladders made prior to June 1984.

Quikstep™ Foldable Ladders

The Quikstep™ Ladder is the latest innovation in ladder technology and is becoming a regular addition to fire departments throughout North America and the world. Small enough when folded to fit inside any compartment on Rescue, Fire, Brush and EMT Trucks. When extended, provides a high-quality, heavy-duty ladder ideal for attic, confined space, trench and emergency situations. Tested to meet the stringent NFPA requirements for straight ladders. *Ship.wt. 35 lbs.*



Cat#	Description	Size Folded	Size Open	Wt.	Price
AR254	10' Quikstep™	23.5"Wx13"Hx2.9"D	15"Wx120"Hx3.25"D	26 lbs.	\$544.95
AR323	Carrying Bag				\$87.95



Little Giant Ladder System

One Ladder Does It All

The Little Giant Ladder System will perform all the functions listed below. You will replace many of the ladders you now carry with this one compact product. Its expense is justified when you consider its convenience and the fact that you will always have the right ladder on the job when you need it.

- ▶ Ladder folds for convenient transportation and storage
- ▶ Unlock ladder and unfold partially to set up step ladder mode
- ▶ Step ladder telescopes on 1' increments to form many heights
- ▶ Telescoping design allows ladder to be used on stairways
- ▶ Separate the sections and combine to form two step ladders
- ▶ Unfold ladder and snap in straight ladder configuration
- ▶ Telescopic design allows for many heights in extension mode
- ▶ Non-NFPA, rated up to 375 lbs.



BB127	7' - 11' Type IAA Little Giant Ladder System	\$449.95
BB128	9' - 15' Type IAA Little Giant Ladder System	\$545.95
BB129	11' - 19' Type IAA Little Giant Ladder System	\$595.95
BB130	Work Platform	\$43.95

Duo Safety Ladders

Aluminum Fire Ladders

Solid beam aluminum construction. Duo-Safety exclusive tongue and groove construction that holds sections firmly and rigidly, without brackets, hooks, or obstructions.

Two-Section (900-A Series)

Cat#	Length	Closed	Width	Weight	Price
S965A	20'	12' 2 ³ / ₄ "	21 ³ / ₄ "	60 lbs.	\$546.95
S965	24'	14' 2 ³ / ₄ "	21 ³ / ₄ "	71 lbs.	\$611.95

Banking thickness = 5³/₈"

Three-Section (1225-A Series)

Cat#	Length	Closed	Width	Weight	Price
S970A	30'	13' 3"	24"	108 lbs.	\$933.95
S970	35'	15' 3"	24"	130 lbs.	\$1,022.95

Banking thickness = 9¹/₈"

Folding Ladders

Lightweight, these ladders fold into a compact bundle for storing or carrying. In the open position, special locking devices keep the ladders absolutely rigid. Equipped with Duo-Safety Ladder shoes as an extra precaution. 300 lb. duty rated.

Aluminum (585-A Series)

Cat#	Length	Closed	Width	Weight	Price
S956	8' 3 ¹ / ₄ "	9' 3 ¹ / ₂ "	12 ¹ / ₈ "	14 lbs.	\$171.95
S956A	9' 3 ¹ / ₄ "	10' 3 ¹ / ₂ "	12 ¹ / ₈ "	16 lbs.	\$193.95
S957	10' 3 ¹ / ₄ "	11' 3 ¹ / ₂ "	12 ¹ / ₈ "	19 lbs.	\$207.95
S958	12' 3 ¹ / ₄ "	13' 3 ¹ / ₂ "	12 ¹ / ₈ "	21 lbs.	\$225.95
S959	14' 3 ¹ / ₄ "	15' 3 ¹ / ₂ "	12 ¹ / ₈ "	24 lbs.	\$239.95

Banking thickness = 1³/₄" x 3³/₄"

Fiberglass Fire Ladders

Fire ladders using extruded fiberglass channel rail construction and aluminum rungs welded to aluminum bocks and riveted to the fiberglass side rails. Safety yellow color for better visibility.

Two-Section Ladders (YGE-2 Series)

Cat#	Extended	Closed	Width	Nested	Weight	Price
R639	16'	10'	23"	7"	80 lbs.	\$658.95
R640	20'	12' 3 ¹ / ₂ "	23"	7"	94 lbs.	\$942.95
R641	24'	14' 3 ¹ / ₂ "	23"	7"	105 lbs.	\$979.95

Wall Ladders (YGW Series)

Cat#	Length	Width	Height	Weight	Price
R642	12'	19 ¹ / ₄ "	3 ³ / ₈ "	28 lbs.	\$304.95
R643	14'	19 ¹ / ₄ "	3 ³ / ₈ "	32 lbs.	\$327.95
R644	16'	19 ¹ / ₄ "	3 ³ / ₈ "	37 lbs.	\$381.95

Roof Ladders (YGR Series)

Cat#	Length	Closed	Width	Weight	Price
R645	12'	19 ¹ / ₄ "	3 ³ / ₈ "	33 lbs.	\$348.95
R646	14'	19 ¹ / ₄ "	3 ³ / ₈ "	38 lbs.	\$377.95
R647	16'	19 ¹ / ₄ "	3 ³ / ₈ "	42 lbs.	\$425.95

Aluminum Roof Ladders

Channel Rail construction gives extra strength without cumbersome weight.

(775-A Series)

Cat#	Length	Width	Weight	Price
S976	10' 2 ¹ / ₂ "	19"	24 lbs.	\$239.95
S977	12' 2 ¹ / ₂ "	19"	28 lbs.	\$261.95
S978	14' 2 ¹ / ₂ "	19"	31 lbs.	\$285.95

Banking thickness = 2³/₄"



S965

S956

R639

S976

Alco-Lite Aluminum Ladder Company

Combination Ladders

Functionally engineered for ease of operation as a step or extension ladder with dozens of uses. Compact design converts easily to extension ladder or "A" ladder. Accessible from both sides. Special heavy duty "A" bracket allows for quick, easy set-up. Meets NFPA.

Cat#	L	A-Ht	A-W	W	Wt.	Price
P704	6'2"	5'10"	4'3"	20 1/2"	27 lbs.	\$392.95
P705	7'4"	7'0"	4'11"	20 1/2"	29 lbs.	\$440.95
P706	8'6"	8'2"	5'4"	20 1/2"	33 lbs.	\$453.95
P707	9'8"	9'1"	6'5"	20 1/2"	38 lbs.	\$530.95

Banking thickness = 6 3/8"

Truss Type Ladders

Two-Section Ladders (TEL Series)

Oversized 2 1/4" pulley for easy operation. 45' and larger ladders equipped with staypoles.



Cat#	Ext. Closed		Banking		Wt.	Price
	L	L	W	Thickness		
Z354	20'	13'0"	22 1/4"	6 7/16"	93 lbs.	\$813.95
Z355	24'	15'4"	22 1/4"	6 7/16"	110 lbs.	\$900.95
Z356	28'	16'6"	22 1/4"	6 7/16"	118 lbs.	\$1,060.95
Z357	30'	17'8"	22 1/4"	6 7/16"	126 lbs.	\$1,144.95
Z358	35'	20'0"	22 1/4"	6 7/16"	141 lbs.	\$1,265.95
Z359	40'	22'4"	23 1/2"	8 1/8"	214 lbs.	\$1,689.95
Z360	45'	25'10"	23 1/2"	8 1/8"	232 lbs.	\$1,807.95

Three-Section Ladders (TEL3 Series)

3-fly section activated by cable and operates automatically with center section. Oversized 2 1/4" pulley for easy operation. 45' and larger ladders equipped with staypoles.

Cat#	Ext. Closed		Banking		Wt.	Price
	L	L	W	Thickness		
Z347	24'	12'0"	25 3/8"	9 1/16"	142 lbs.	\$1,493.95
Z348	28'	13'2"	25 3/8"	9 1/16"	154 lbs.	\$1,580.95
Z349	30'	14'4"	25 3/8"	9 1/16"	163 lbs.	\$1,520.95
Z350	35'	15'6"	25 3/8"	9 1/16"	175 lbs.	\$1,649.95
Z351	40'	16'8"	27"	9 1/16"	223 lbs.	\$1,996.95
Z352	45'	19'0"	27"	10 3/4"	242 lbs.	\$2,130.95
Z353	50'	20'2"	27"	10 3/4"	273 lbs.	\$2,373.95

Roof Ladders (TRL Series)

Designed for scaling roofs. High-strength steel, 3/4" rotating roof hooks with reinforcing brace.

	L	W	Wt.	Price
Z362	12'5"	19 1/16"	43 lbs.	\$431.95
Z363	14'9"	19 1/16"	50 lbs.	\$455.95
Z364	16'11"	19 1/16"	56 lbs.	\$512.95
Z365	18'2"	19 1/16"	60 lbs.	\$536.95

Z362-Z367 Banking thickness = 3 3/4"

	L	W	Wt.	Price
Z366	20'6"	19 1/16"	65 lbs.	\$586.95
Z367	24'0"	19 1/16"	76 lbs.	\$689.95
AR162	26'4"	19 1/16"	92 lbs.	\$945.95
AR163	28'8"	19 1/16"	100 lbs.	\$1,020.95

AR162 and AR163 Banking thickness = 5 7/16"

Folding Attic Ladders

The ultimate in lightweight portability for low to medium height access. Folds laterally into 5 1/4" wide. Hinge locks ladder into position. Large, heavy cast aluminum swivel safety shoes assure the best traction. Handles allow for easier and safer carrying. Designed for maximum one-man load. Meets NFPA.



Cat#	Open		Folded		Wt.	Price
	L	L	W	W		
Z390	8'3"	9'3"	5 1/4"	15 1/2"	12 lbs.	\$176.95
Z391	10'6"	11'5"	5 1/4"	15 1/2"	14 lbs.	\$213.95
Z392	12'8"	13'8"	5 1/4"	15 1/2"	17 lbs.	\$231.95
Z393	14'11"	15'11"	5 1/4"	15 1/2"	21 lbs.	\$252.95

Banking thickness = 2"

Aluminum Pumper Type Ladders

Two-Section Ladder (PEL Series)

Oversized 2 1/4" pulley for easy operation.

Cat#	Ext. Closed		Banking		Wt.	Price
	L	L	W	Thickness		
Z373	12'	8'5"	21"	5 1/16"	48 lbs.	\$401.95
Z374	14'	9'7"	21"	5 1/16"	53 lbs.	\$442.95
Z375	16'	10'9"	21"	5 1/16"	59 lbs.	\$483.95
Z376	20'	12'0"	21"	5 1/16"	66 lbs.	\$539.95
Z377	24'	14'3"	21"	5 1/16"	75 lbs.	\$604.95
Z378	28'	16'7"	22"	5 13/16"	114 lbs.	\$787.95
Z379	30'	17'9"	22"	5 13/16"	122 lbs.	\$850.95
Z380	35'	20'1"	22"	5 13/16"	139 lbs.	\$958.95

Three-Section Ladders (PEL3 Series)

3-fly section activated by cable and operates automatically with center section. Oversized 2 1/4" pulley for easy operation.

Cat#	Extd. Closed		Banking		Wt.	Price
	L	L	W	Thickness		
Z368	24'	12'2"	23 1/2"	7 1/4"	105 lbs.	\$844.95
Z369	28'	13'4"	25"	8 1/4"	145 lbs.	\$913.95
Z370	30'	14'6"	25"	8 1/4"	158 lbs.	\$1,012.95
Z371	35'	15'8"	25"	8 1/4"	170 lbs.	\$1,080.95
Z372	40'	17'0"	26"	8 1/4"	220 lbs.	\$1,559.95

Roof Ladders (PLR Series)

High-strength steel, 3/4" rotating roof hooks with reinforcing brace for durability.

	L	W	Wt.	Price
Z381	8'5"	18 1/2"	27 lbs.	\$237.95
Z382	10'9"	18 1/2"	33 lbs.	\$258.95
Z383	12'0"	18 1/2"	36 lbs.	\$275.95
Z384	14'3"	18 1/2"	42 lbs.	\$294.95

Banking thickness = 2 7/8"

	L	W	Wt.	Price
Z385	16'7"	18 1/2"	48 lbs.	\$331.95
AR160	18'10"	18 1/2"	54 lbs.	\$421.95
AR161	20'0"	18 1/2"	60 lbs.	\$469.95

Banking thickness = 2 7/8"



What Makes A Darley Siren Better?

Electro-Mechanical Warning Sirens. No speakers or amplifiers here, just real, honest, big-time, worry-free sound. **100% Maintenance Free.** Not just a part of the siren, the whole system! **Non-Rotating:** Forget about the worries of rotating sirens, these units only have two moving parts! **Compatibility:** these sirens will integrate seamlessly with 99% of existing siren systems. **Lifetime Tech Support** is included with every siren. No matter how old your siren is, we will help you through any problems.

Skirted Warning Siren in Single-Phase or Three-Phase

DYNAMITE - lots of power in a smaller package. Great versatility too, whether you are supplying a large industry, small community, or filling "dead spots" the 107 dB rated 5 HP siren is the answer. The non-corrosive cast aluminum fan is available in your choice of single-phase or three-phase power, and produces a port tone frequency of 460 cycles per second for great penetration power. Available in any color. Ship wt. 250 lbs.

See Accessories Below

AC46701	5 HP Three-Phase Siren with Skirt	\$2,671.95
AC46801	5 HP Single-Phase Siren with Skirt	\$2,953.95
AB331	Pole Mounting Bracket	\$440.95
AB934	Siren Heating System	\$747.95

Single-Phase or Three-Phase Siren with Projection Horns

Designed for small departments or for supplementing larger systems, the 3V8-H combines brute strength at an eye-catching price. If the siren you need demands an effective coverage of 1/2 - 2/3 of a mile in every direction, here is your answer. Utilizing a 460 Hz. pitch, this siren produces a tone that stands up to wind fade and tree cover. A continuous-duty motor and sealed bearings mean this siren is 100% maintenance-free! Available in any color. Ship wt. 250 lbs.

See Accessories Below

AC46702	5 HP Three-Phase Siren w/Horns	\$2,989.95
AC46802	5 HP Single-Phase Siren w/Horns	\$3,280.95
AB331	Pole Mounting Bracket	\$440.95
AB934	Siren Heating System	\$747.95



Three-Phase Siren Accessories

AC455	Motor Starter/General Enclosure	\$457.95
AC456	Motor Starter/Weatherproof Enclosure	\$589.95

Single-Phase Siren Accessories

AC457	Motor Starter/General Enclosure	\$458.95
AC458	Motor Starter/Weatherproof Enclosure	\$574.95

Our Most Popular Single-Tone Siren

Comes in Single-Phase or Three-Phase

Intended for medium-sized Fire Departments, the 7V8 is a step up in size and sound power. The 7V8 uses a 460 Hz pitch for penetration power that also stands up to wind fade and tree cover. Non-Rotating design means longer life span, clearer signals, and no maintenance. Designed for up to a mile of total coverage. Bulletproof construction is designed for decades of dependable use. Available in any color. Ship wt. 325 lbs.



AR245	7.5 HP Three-Phase Siren with Horns	\$4,127.95
AC459	Motor Starter for Three-Phase Siren/Standard Enclosure	\$482.95
AC460	Motor Starter for Three-Phase Siren/Weatherproof Enclosure	\$603.95
AR246	7.5 HP Single-Phase Siren with Horns	\$5,131.95
AC461	Motor Starter for Single-Phase Siren/Standard Enclosure	\$653.95
AC462	Motor Starter for Single-Phase Siren/Weatherproof Enclosure	\$823.95
AB331	Pole Mounting Bracket	\$440.95
AB934	Siren Heating System	\$747.95

Our Loudest Single-Tone Warning Siren

Staged horn projectors help organize and distribute sound for a large, even coverage area. This rugged siren has been installed in over 1,000 cities world-wide. Built to our famous standards for durability and performance, this siren is a true performer. With coverage of over 1 square mile, this is the perfect siren for medium-sized departments. Available in any color. Ship wt. 350 lbs.



Y772	10 HP Three-Phase Siren w/Horns	\$4,295.95
AC463	Motor Starter for Three-Phase Siren/Standard Enclosure	\$666.95
AC464	Motor Starter for Three-Phase Siren/Weatherproof Enclosure	\$823.95
Y774	10 HP Single Phase Siren w/Horns	\$5,419.95
AC465	Motor Starter for Single-Phase Siren/Standard Enclosure	\$797.95
AC466	Motor Starter for Single-Phase Siren/Weatherproof Enclosure	\$991.95
AB331	Pole Mounting Bracket	\$440.95
AB934	Siren Heating System	\$747.95

Dual-Rotor/Two-Tone Warning Siren for the Bigger Jobs

Our most affordable dual-tone siren, this giant is designed to excel in almost any application. Its staged horn projectors provide a large, even coverage area with two distinct sound pitches. Rated at 122 dB at 100 feet, the **AG610** and **AG613** are OMNI-DIRECTIONAL sirens which produce continuous 360° coverage, a clear advantage over rotating sirens. No fiberglass or plastic materials here! All exposed siren components are of zinc-plated, steel construction, which are powder coated for the most durable finish available. Available in any color. Ship wt. 600 lbs.

AG610	10 HP Three-Phase, Dual Tone Siren	\$7,707.95
AG611	Motor Starter for Three-Phase Siren Standard Enclosure	\$666.95
AG612	Motor Starter for Three-Phase Siren/Weatherproof Enclosure	\$823.95
AG613	10 HP Single-Phase, Dual Tone Siren	\$7,707.95
AG614	Motor Starter for Single-Phase Siren/Standard Enclosure	\$823.95
AG615	Motor Starter for Single-Phase Siren/Weatherproof Enclosure	\$991.95
AB331	Pole Mounting Bracket	\$440.95
AB934	Siren Heating System	\$747.95



The Darley "Decibel-Busting" 15 Horsepower Siren

Get ready for power! This 15 HP giant delivers enough sound for the largest of coverage areas. A true workhorse, The **AC431** and **AC433** are ready to tackle the bigger jobs. Available in dual-tone and single-tone, for maximum penetration power, these units are built to Darley's rigorous standards for bulletproof reliability and astounding performance. These units are made with zinc-plated, powder-coated, heavy-gauge steel for a lifetime of dependable operation. Available in any color. Also available in single phase, call for pricing. Ship wt. 750 lbs.

AC433	15 HP Three-Phase, Dual Tone Siren	\$8,497.95
AC453	Motor Starter for Three-Phase Siren/Standard Enclosure	\$830.95
BD126	Motor Starter for Three-Phase Siren/Weatherproof Enclosure	\$990.95
AB330	Start/Stop Switch	\$81.95
AC431	15 HP Single-Phase, Single Tone Siren	\$9,870.95
BD127	Motor Starter for Single-Phase Siren/Standard Enclosure	\$1,163.95
BD128	Motor Starter for Three-Phase Siren/Weatherproof Enclosure	\$1,153.95
AB331	Pole Mounting Bracket	\$440.95
AB934	Siren Heating System	\$747.95



110v Electro-Mechanical Indoor/Outdoor Alarm Siren

An extremely loud & powerful siren for outdoor or indoor installations, fully weatherproofed, rated at 111 dB. at 10 ft. Can be used as a general emergency signal in industrial and small municipal areas or as a fire alarm. Voltage: 110 AC/DC, amps: 2.5. Measures 14½" long x 12" high. Features powder coated finish over heavy-gauge aluminum for the most durable scratch-resistant finish on the market. Uses low power consumption while providing high sound output. Can be mounted on any solid surface using two bolts. May be swiveled 180° vertically or horizontally. UL Listed. Ship. wt. 13 lbs.

R828	Darley 110-Volt Alarm Siren	\$475.95
-------------	-----------------------------	----------



G3 Siren Controller Wireless Siren Activation and Control

- ▶ Auto Test Function: Standard, Automatic, Daily, Weekly activation replaces clock networks
- ▶ PLC based environment (Programmable Logic Controller)
- ▶ Whip antenna standard
- ▶ User-programmable siren timing controls
- ▶ Can receive up to 16 different frequencies in one unit. Low band/UHF/VHF/900 MHz
- ▶ Up to 4 DTMF codes per group and up to 4 groups mean 16 different codes/functions
- ▶ DTMF and Two-Tone Sequential can be combined in the same unit
- ▶ Battery backup capability is standard
- ▶ Two-way communication via SCADA ("Talk Back Enabled") (GEN 5 Series)
- ▶ Windows-based programming environment



BG167

G1 Siren Controller Hand Wired Activation and Control

- ▶ Auto Test Function: Standard, Automatic, Daily, Weekly activation replaces clock networks
- ▶ PLC based environment (Programmable Logic Controller)
- ▶ User-programmable siren timing controls
- ▶ Battery backup capability is standard
- ▶ Overload protection is standard
- ▶ Windows-based programming environment



Specify frequency, tone codes, and signal timing

BG167	G3 Siren Controller	\$1,898.95
BG168	G1 Siren Controller	\$994.95



BG168

BE285

BE286

LED Flashing Safety Vests

Feel Safer Now That You Can Be Seen

The new LED flashing safety vest is a 20 light (9 on the front and 11 on the back) LED flashing vest that can be seen from approximately 600 yards, weather permitting. The LED flashing safety vest can be custom printed front and back or left blank. These LEDs are powered by 3 AA batteries that can easily be turned off by a push button on the front when not in use. The LEDs will remain lit for approximately 200+ hours. *The LED flashing safety vest meets ANSI Class 2 requirements. One size fits all with adjustable straps on the side.*



Specify color: International orange or lime yellow

BE285	LED Flashing Safety Vest with Adjustable Straps	\$25.95
BE286	LED Flashing Safety Vest with Velcro® Straps	\$25.95

Fire Resistant Vests

- ▶ Velcro® front closure
- ▶ ANSI-certified polyester mesh (6 oz.)
- ▶ 2" Scotchlite® striping
- ▶ Inside pocket
- ▶ Standards: ANSI 107 Class 2, NFPA 701 & ASTM F1506 vertical flammability
- ▶ Ship wt. 1 lb.

Specify Size: S/M, L/XL, XXL/XXXL

BC107	Lime Fire Resistant Vest	\$28.95
-------	--------------------------	---------

Expandable Vests

Fits Over Turnouts

- ▶ Velcro® front closure
- ▶ ANSI-certified polyester mesh (5 oz.)
- ▶ Level 2 ANSI-certified striping with 4.5" contrasting color
- ▶ Inside multi-tiered pocket
- ▶ Standards: ANSI 107-Class 2
- ▶ Orange or Lime
- ▶ Ship wt. 1 lb.

Specify Size: M/L or XL/XXL

BC104	Orange Expandable Vest	\$29.95
BC105	Lime Expandable Vest	\$29.95

BC107

BC105

Triage Vest Set

This prepackaged kit of all orange vests consists of eight regular size vests and a carrying case. The set includes the titles listed below. The carrying case is designed to carry the eight vests in the elastic loops. Interior slot pocket allows for a command board up to 14"x18". Made of 1000 denier Cordura® nylon with a 4"x18" reflective panel on the side. *Carrying case is red and 19"x15"x5". Ship wt. 8 lbs.*

Titles

- ▶ INCIDENT COMMANDER
- ▶ OPERATIONS
- ▶ MEDICAL
- ▶ TRIAGE
- ▶ TREATMENT
- ▶ TRANSPORTATION
- ▶ STAGING
- ▶ WINDOW

BE018	Triage Vest Set	\$395.95
-------	-----------------	----------

Fire Command Vest Set

This prepackaged kit consists of a carrying case and 10 large size vests that are better for fitting over turnout gear. The carrying case is designed to carry ten vests, including large sizes, in the elastic loops. Vest can be mixed and matched. Interior slot pocket allows for a command board up to 18"x24" made of 1000 denier Cordura® nylon with a 4"x18" reflective panel on the side. *Carrying case is red and 19"x25"x5". Ship wt. 8 lbs.*

Titles

- ▶ INCIDENT COMMANDER
- ▶ SAFETY OFFICER
- ▶ OPERATIONS
- ▶ INFORMATION OFFICER
- ▶ ACCOUNTABILITY
- ▶ REHAB
- ▶ STAGING
- ▶ AIR SUPPLY
- ▶ WATER SUPPLY

BC037	Fire Command Vest Set	\$394.95
-------	-----------------------	----------



Command Vest

Choose from hundreds of titles or create your own!

- ▶ Title up to 19 spaces
- ▶ Extra heavy-duty nylon mesh with bound and double-stitched edges
- ▶ Adjustable side-release buckles
- ▶ 3M Scotchlite™ reflective trim
- ▶ Ship wt. 1 lb.



For a complete list of titles, visit edarley.com/vests

Specify color: Orange, Lime Green, Royal Blue

AW357	Command Vest	\$60.95ea.
AW359	Title Mesh Vest	\$46.95ea.

Heavy-Duty Traffic Vest

High-visibility, fluorescent orange, open-front vest constructed of heavy-duty PVC coated polyester and is resistant to rot and mildew. Has 1 3/8" lime yellow vertical stripes and two 4"x18" reflective patches with your choice of legends sewn on both the front and back. Front Velcro® closure and elastic side straps. Custom lettering available upon request. Ship. wt. 1 lb.

- ▶ FIRE
- ▶ EMS
- ▶ HAZMAT
- ▶ FIRE RESCUE

Specify title

AR184	Heavy-Duty Traffic Vest	\$23.95
-------	-------------------------	---------

Darley Safety Vest

High visibility, fluorescent orange vest is constructed of a soft, breathable, polyester mesh. Features 1 3/8" lime yellow vertical stripes with black binding. Front Velcro® closure and tie side closures. Ship. wt. 1 lb.

AR183	Darley Safety Vest	\$9.95
-------	--------------------	--------

ANSI Vest Class 2

Made from 100% lightweight/breathable performance knit polyester. The fabric is soft, comfortable and durable. Oversized. Sewn reinforced side and shoulder seams. Velcro® closures (2" wide). Two inside cargo pockets with Velcro® closures. Easy-access armholes for freedom of movement. Comes in Lime Yellow with silver tape. Capture MAXIMUM visibility in a full cut vest. Title panels available for the front or back. Available in Orange and Lime Yellow. Ship. wt. 1 lb.

- | | |
|--|---|
| <p>Titles</p> <ul style="list-style-type: none"> ▶ ACCOUNTABILITY ▶ AIR SUPPLY ▶ COMMAND ▶ DECONTAMINATION ▶ ENTRY TEAM ▶ EMERGENCY MANAGEMENT ▶ EMS ▶ EMS COMMAND ▶ FIRE ▶ FIRE DEPARTMENT ▶ FIRE RESCUE ▶ FIRE POLICE ▶ HAZMAT ▶ INCIDENT COMMAND | <ul style="list-style-type: none"> ▶ INCIDENT COMMANDER ▶ INFORMATION OFFICER ▶ MEDICAL OPERATIONS ▶ PARAMEDIC ▶ REHAB ▶ SAFETY ▶ SAFETY OFFICER ▶ SECURITY ▶ STAGING ▶ TREATMENT ▶ TRIAGE ▶ TRANSPORTATION ▶ WATER SUPPLY |
|--|---|

Specify title

Specify size: Large - 2XL

BE016	Orange ANSI Vest Class 2	\$43.95ea.
BE017	Lime Yellow ANSI Vest Class 2	\$43.95ea.

Fast delivery



BE016 - Shown with front panel

BE017 - Shown with back panel

Darley Traffic Cones

Feature brilliant Day-Glo fluorescent orange color with ultraviolet additives to protect against color fading and wide base for maximum stability. Available with or without reflective collars. *Color: Orange*

All Cones		
Size	Case	Weight
12"	30	45 lbs.
18"	20	68 lbs.
28"	10	58 lbs.
36"	10	110 lbs.

Without Reflective Collars

		Price Ea.
T444	12" Traffic Cone	\$5.95
T445	18" Traffic Cone	\$8.95
T446	28" Traffic Cone	\$12.95
T447	36" Traffic Cone	\$21.95

With Reflective Collars

		Price Ea.
AK263	12" Traffic Cone with 4" Collar	\$9.95
AK264	18" Traffic Cone with 6" Collar	\$13.95
AK265	28" Traffic Cone with 4" and 6" Collars	\$21.95
AK266	36" Traffic Cone with 4" and 6" Collars	\$26.95



Fluorescent Lime Cones

- ▶ Wide body design
- ▶ Flow molded, dayglow fluorescent lime with white inner liner
- ▶ Differentiates work zone for added measure of safety
- ▶ Fluorescent color increases pedestrian and driver awareness
- ▶ Comes with a 4" and 6" collar
- ▶ Color: Fluorescent lime

BE019	18" Fluorescent Lime Cone	\$25.95
BE020	36" Fluorescent Lime Cone	\$28.95



Stacker Cones

The full 42" length of the Stackers are eye level to drivers. Because of their molded-in handle they are easier to use and they are stackable, requiring less storage and transport space. Its octagonal base makes it virtually impossible to tip over in ordinary circumstances. Stacker Cones are available with your choice of base as well as optional striping. *Small funnel included. Ship. wt. 2 lbs.*

- ▶ Tallest cones available
- ▶ Convenient storage

Stacker Cone - Specify Color: Yellow or Orange

Cat#	Description	Colors	Price
AL239	Stacker Cone	Yellow or Orange	\$14.95

Cone Collars - Specify Color

Cat#	Description	Colors	Price
AL243	4" Cone Collar	Silver or Blue	\$9.95
AL244	6" Cone Collar	Silver or Green	\$9.95

Cone Bases

Cat#	Description	Weight	Price
AL240	Plastic Cone Base, Sand Fillable	16 lbs.	\$9.95
AL241	Rubber Cone Base	16 lbs.	\$22.95



Clip-On Safety Warning Signs

Fits Traffic Cones & Delineators

By using the Clip-On Safety Signs with your present cones and delineators, you can now give fast and simple directions at a quick glance. This makes for a safer work area and more effective flow of traffic. They're easy to install with a firm grip that locks onto any standard traffic cone barrel or delineator. Sign is made of super strong durable ABS plastic and is available with or without reflective lettering. *Call for pricing on other sizes. Ship. wt. 1 lb.*

Specify Legend - Minimum Order is 5

AG170	Safety Sign, Non-Reflective	\$10.95/ea.
AG171	Safety Sign, Reflective	\$19.95/ea.



Quick Deploy™ Spring Cone™ Tote and Bag System

- ▶ Compact for easy storage on any truck, or in vehicle trunk
- ▶ Meets MUTCD requirements for 28" highway traffic cone
- ▶ Flexible Spring Cone™ splits wind for increased stability
- ▶ Quickly deployed Spring Cone™ delineates traffic at any scene
- ▶ Cone is made of a durable, bright orange, flexible mesh material
- ▶ Rubber base holds cone in place and grips the road for stability
- ▶ Flexible spring allows cone to automatically self deploy
- ▶ Lightweight - cones are half the weight and pack in one-third the space of traditional highway cones

Spring Cones with Plastic Tote Storage System

BB071	(2) 28" Reflective (6" & 4"), 3 lb. Spring Cones	\$95.95
BG142	(2) 28" Reflective (6" & 4"), 5 lb. Spring Cones	\$97.95

Spring Cones with Wire/Mesh Tote Storage System

BB073	(4) 28" Reflective (6" & 4"), 3 lb. Spring Cones and 1 Tote	\$174.95
BG143	(4) 28" Reflective (6" & 4"), 5 lb. Spring Cones and 1 Tote	\$175.95
BB075	(6) 28" Reflective (6" & 4"), 3 lb. Spring Cones and 1 Tote	\$222.95
BG144	(6) 28" Reflective (6" & 4"), 5 lb. Spring Cones and 1 Tote	\$248.95

Spring Cones

BB077	28" Reflective (6" and 4"), 3 lb. Spring Cone	\$34.95
BG145	28" Reflective (6" and 4"), 5 lb. Spring Cone	\$33.95



Fold & Roll™ Sign System

Emergency personnel face not only the hazard at the situation they are attempting to suppress, but they are also facing hazards from motorists driving through or near an emergency scene. Advanced warning signs alert motorists of hazardous conditions ahead and create a higher level of awareness. Proper training in the use and deployment of signage is essential as are general safety guidelines to be used in hazardous situations. *Ship. wt. for sign 8 lbs., sign and stand 27 lbs.*

Legends

- ▶ Accident Ahead
- ▶ Detour. Extra charge for arrows, call your Darley representative for pricing
- ▶ Emergency Scene Ahead
- ▶ Collapse Zone
- ▶ Command Post
- ▶ Incident Ahead
- ▶ Fire Area Keep Out
- ▶ Traffic Emergency Ahead
- ▶ Fire Training Ahead

Specify Legend: See Above Specify Color: Orange or Pink

BA107	36" Sign/Stand Fold & Roll™ Sign System	\$246.95
BA108	48" Sign/Stand Fold & Roll™ Sign System	\$293.95
BA109	36" Sign Only	\$134.95
BA110	48" Sign Only	\$197.95

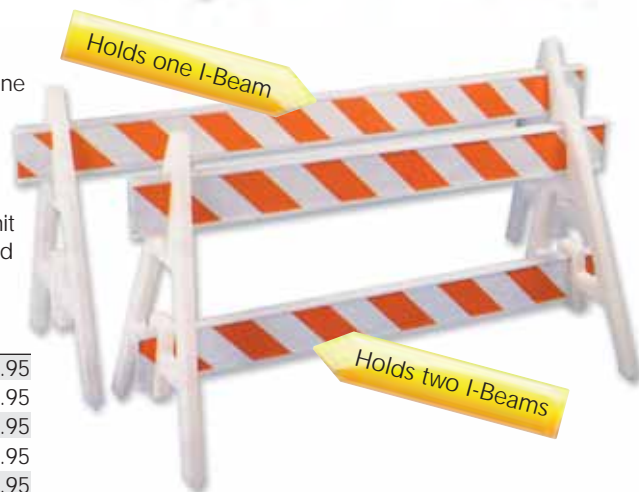


Always Be Prepared with Instant A-Frame Plastic Barricades

Heavy, rugged and very visible; excellent for crowd control and crime scene protection. I-Beam construction, available in 6' or 10' lengths, assures additional rigidity and protects the high-intensity reflective sheeting. A-frame legs come with upper and lower panels slots and can be internally ballasted with sand. Beams have precise fit into matching slots on A-frame pieces. The white color never needs painting and the entire unit won't rust or give splinters. Complete unit includes two A-frame pieces and your choice of one or two I-beams. *Ship. wt. 19 lbs.*

- ▶ High-intensity sheeting

AG647	A-Frame Barricade with 6' I-Beam	\$115.95
AH323	A-Frame Barricade with 8' I-Beam	\$136.95
AG648	A-Frame Barricade with 10' I-Beam	\$183.95
AH324	A-Frame Barricade with (2) 6' I-Beams	\$184.95
AH325	A-Frame Barricade with (2) 8' I-Beams	\$228.95
AH326	A-Frame Barricade with (2) 10' I-Beams	\$330.95



Day/Night Barricade Tape

The brand new technology of Day/Night visibility barricade tape is formulated with an exclusive night time visibility silver ink that is combined with our superior co-extruded polyethylene to provide a cost-effective and disposable solution to your night time needs. Length: 3" x 1000', thickness: 3 mil. Ship. wt. 4 lbs.



Specify Legend: Caution, Danger, Fire Line Do Not Cross

BA101 Day/Night Barricade Tape \$15.95/roll

Barricade Banner Tape

It's so inexpensive that you can carry a spool in every emergency vehicle. Each spool is 3"x1000' and made of tough 2 mil. polyethylene. Available in various colors and legends. Ship. wt. 4 lbs.

1000-foot rolls!

Choose From A Variety Of Different Titles

- Fire Line Do Not Cross
- Caution Do Not Enter
- Caution Radiation Area
- Danger Do Not Enter
- Caution Biohazard



Specify Legend

AJ351 Barricade Banner Tape \$11.95/roll

Lightweight Megaphone

NEW



Piezo Dynamic technology is revolutionary technique that allows a megaphone to operate more efficiently, and with less weight than ever before.

- ▶ Patented Piezo Dynamic technology
- ▶ Lasts 40 hrs. continuously on 8 "C" cells
- ▶ Weighs 50% less than a conventional model
- ▶ Adjustable volume
- ▶ Can use rechargeable batteries
- ▶ Charge with 12V DC car cable or plug-in DC transformer

BH058 Lightweight Megaphone \$73.95

Handheld Paddle Signs

For use at accidents, road blocks, by school patrols and others. Perfect for traffic control. Large 18" diameter with bold 6" high letters. Made of tough, durable material that's lightweight, corrosion-resistant and without sharp edges. STOP is white against red, SLOW is orange/ black with wood handle. Ship. wt. 1 lb.



P120 18" STOP/SLOW \$14.95
 P121 18" STOP Both Sides \$14.95
 C817 9 3/4" STOP Only, Aluminum Paddle \$6.95

Homeland Security I.D. Kit

Be prepared for any Homeland Security Emergency and give your customers options. Our specialty tape and tags will carry appropriate legends that will help organize departments or areas, in case of an emergency, as well as assist in newly adopted security measures. Tapes are available in our standard specifications for barricade tape and adhesive tapes.

Kit Includes:

- ▶ 1 - Command Post
- ▶ 1 - Public Info Area
- ▶ 2 - Staging Area
- ▶ 1 - Decon Area
- ▶ 1 - Hot Zone
- ▶ 2 - Warm Zone
- ▶ 2 - Cold Zone



Rolls included measure 3" x 500'
 AZ619 Homeland Security Hazmat I.D. Kit \$86.95

Fleet Emergency Safety Kit

Includes:

- ▶ Three - Compact safety triangles
- ▶ One - 2 3/4 lb. 10 B.C. fire extinguisher
- ▶ Three - 30-min. Cyalume® Lightsticks
- ▶ One - Hold-down strap and heavy-duty red metal carrying case
- ▶ Box Dimensions: 20" Lx7"Wx8"H



BE021 Fleet Emergency Safety Kit \$129.95

Turbo Flare Day/Night Emergency Flares

Toughest, Safest, Brightest, and Smartest 24-hr. Electronic Road Flare

- ▶ State-of-the-art electronic flare
- ▶ Rechargeable "AA" and "C" battery, respectively
- ▶ Made from Surlyn - one of the toughest synthetics known to man
- ▶ Weatherproof "O" ring seal
- ▶ Light source: 20 high-output LEDs
- ▶ Spring-loaded moisture-resistant ON/OFF switch
- ▶ Low battery indicator light
- ▶ 100,000 hr. life LEDs



Specify Color: Red, orange, or amber

BG164 8 SOS Deployment Case with Pennant Flags \$593.95

BG165 Single Unit SOS \$62.95

FlareAlert™

The FlareAlert™ is a battery-operated electronic safety flare visible for miles from both the ground and air. The FlareAlert™ has a battery life of approximately 20 hours in flash mode and approximately 6 hours in steady-on mode. The bulb life is approximately 10 years.



- ▶ Weather resistant
- ▶ Compact and lightweight design
- ▶ Dual lighting options
- ▶ Magnetic base
- ▶ Environmentally friendly
- ▶ Easy-to-use
- ▶ No fumes
- ▶ Crush resistant
- ▶ Safe for indoor use
- ▶ No dangerous hot flames
- ▶ Affordable
- ▶ LED Technology

BC038 FlareAlert™ Electronic Flare \$12.95

Three-Triangle Vehicle Warning Kit



No flares or electric flashers are necessary with the Vehicle Warning Kit. The kit includes three fold-out reflective triangles that snap into position in seconds. Each triangle is attached to a heavy four pound weighted base. Made of tough plastic with reflective red and fluorescent orange on both faces. Comes complete with handy carrying case for easy storage. Ship. wt. 15 lbs.

P639 Three-Triangle Vehicle Warning Kit \$21.95

Flare Container

Conveniently Store Your Flares and Keep Them From Damage

Keep your flares together, easily accessible and safe from damage. Flare Container can hold up to twelve 30-minute flares. Easy to open cap and large handle make it user-friendly. It's so inexpensive, one can be kept in every vehicle. Ship. wt. 1 lb.



AH002 Flare Container \$11.95

Darley Safety Flares



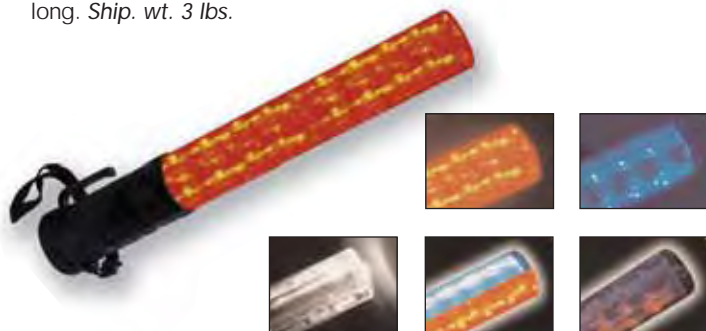
15 and 20-minute flares sold in cases of 72. 30-minute flares sold in case of 36. All sold in gross of 144.

Cat#	Type	Case Price	Gross Price
AF409	15 Minute, No Spike	\$75.95	\$135.95
W947	20 Minute, No Spike	\$89.95	\$161.95
W948	30 Minute, No Spike	\$62.95	\$237.95
AF410	15 Minute, With Spike	\$83.95	\$150.95
W949	20 Minute, With Spike	\$101.95	\$182.95
W950	30 Minute, With Spike	\$68.95	\$248.95
W951	20 Minute, With Stand	\$121.95	\$218.95
AF411	30 Minute, With Stand	\$82.95	\$282.95

Flashback Five™ Light Baton

"The Brilliance of a Lightbar - The Size of a Flashlight"

The Flashback Five's advanced LED light and reflector technology makes it the brightest and most powerful signal light available. Its five stage switch provides red, blue, red/blue alternating, red/blue blend and a flashlight selection. The 20 brilliant LED bulbs can be seen for up to 1 mile and provides 300 hours of continuous flashing! The Flashback Five™ can be used as a signal light, a vehicle warning light (with its built in magnetic mount tailcap - placement can be anywhere on vehicle) or as an "on-the-scene" dash or deck light. Its weather-resistant body is made of high-impact ABS plastic and operates up to 7 hours on 4 AA batteries. Flashback Five™ also has a non-slip textured grip with a built-in belt clip and wrist strap. Measures 13½" long. *Ship. wt. 3 lbs.*



BG125 Flashback Five™ Light Baton \$39.95

Cyalume Light Sticks

Cyalume light sticks will not cause an explosion or be a fire hazard in areas which contain combustible mixtures of gases or liquids. 12-hour light emission is provided by a chemical reaction which takes place when two solutions are allowed to mix. *Ship. wt. 1 lb.*



Specify Color: Yellow, Red, or Green

BD037 6" 12 hr. Light Stick \$1.95/ea.
Minimum order of 10

Multi-Purpose Glow Baton™

A high-quality versatile signaling device that has hundreds of uses. Switches colors with a push of the button. Features a non-incendiary design that eliminates the hazard caused by standard road flares and will not burn or damage clothing or other items. Built to perform under the most hazardous conditions in day, night or other low-visibility situations. Made of waterproof, high-strength industrial grade plastic. Takes 2 "AA" batteries not included. Measures 13½" long. Available in one, two or three color. *Ship. wt. 1 lb.*



**Push Button
Color Change**



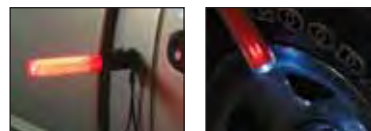
AM202 Glow Baton™, Red \$32.95
AM203 Glow Baton™, Red/Green \$42.95
AM204 Glow Baton™, Red/Green/Blue \$53.95

2-in-1 Traffic Baton

- ▶ 2 separate functions (baton-flashlight)
- ▶ 4 operating modes:
 - Baton steady (18 LEDs): 8 hrs of battery life
 - Baton flash (18 LEDs): 11 hrs of battery life
 - Flashlight (12 white LEDs): 10 hrs of battery life
 - Flashlight w/baton steady (30 total LEDs): 6 hrs of battery life
- ▶ Durable ABS casing with polycarbonate lens
- ▶ Magnetic base, will stick to vehicle
- ▶ Dimensions: 10³/₈" x 1¹/₁₆" x 1¹/₁₆"
- ▶ Weight: 8.4 oz with batteries
- ▶ Battery operated (requires 3 AA alkaline batteries, not included)



Shown with
BE023



BH097 2-in-1 Traffic Baton \$29.95
BE023 Tripod \$11.95

Lite Tracker™

Be seen in low visibility situations. Super bright LEDs provide an attention-getting strobe that can be seen from a mile or more away. This small, lightweight device is housed in a virtually indestructible polycarbonate case and easily attaches to clothing or belts with its grip clip or D-ring. Takes 2 "AAA" batteries (included) for 50 continuous hours of use. Its waterproof design makes it ideal for marine applications. Diver's model is tested to 100 feet. **AR300** comes in amber only. *Ship. wt. 1 lb.*



**Push Button
Activation**

Specify color for AR299



AR299 Lite Tracker™ \$41.95
AR300 Diver's Model (Amber) \$43.95

FLASHBACK™ LED Light Baton

The FLASHBACK™ LED Light Baton is the most visible flashing signal light available. The 6 highly-luminous LED bulbs can be seen for up to ¾ of a mile and flash approximately 150 times per minute. FLASHBACK™ provides a minimum of 300 hours of continuous flashing operation. The three stage switch provides off, flashing or steady light. The weather resistant body is made of ABS high impact plastic, while the tube is PC transparent material. *Ship. wt. 1 lb.*

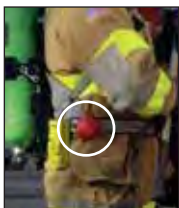


BB069 FLASHBACK™ LED Light Baton \$28.95

Lightman Strobe

Be Seen Up To 3 Miles In Dense Smoke and Fire

Intensely bright xenon strobe will help you be seen in any low visibility situation, giving 83 FPM (800,000 CP) and can be seen up to 3 miles. Easily attaches to turnout gear, belts and clothing or traffic cones, reflective triangles or even vehicles. With the four different mounting adapters included, you can use the Lightman just about anywhere. Rugged construction is reliable in extreme weather conditions with no danger of fire or spark. Takes 2 "AA" batteries (not included).
Ship. wt. 1 lb.



Amber Blue Green Clear Red

Specify color

AH024 Lightman Strobe \$21.95

LED Light Kits

The Lightman ultra-bright, wide-angle LED models give you extraordinary visibility, durability, and battery life. They are palm-sized and weigh less than four ounces with battery installed. Accessories in the kit include a suction cup, belt clip, magnet, and all-purpose eyelet.

	Amber	Blue	Red	White
AZ434 Lightman LED Kit	\$23.95	\$25.95	\$23.95	\$33.95

Flight Site Landing Zone Kit

The Flight Site 5-strobe system, with its 12,800' ceiling, identifies the landing zone to the pilots from great distances. It's easy-to-use and quickly deployed. Patented Weightwashers will not allow the strobes to move even under the heaviest rotorwash conditions. Enhance your medic landing zones as well as emergency scenes. Ship. wt. 5 lbs.

- Includes:**
- ▶ 5 Xenon Strobe
 - ▶ 5 clear lenses
 - ▶ 5 amber lenses
 - ▶ 5 red lenses

- Includes:**
- ▶ 5 Weightwashers™ for stabilizing strobes
 - ▶ 10 AA batteries
 - ▶ Carrying bag



AK281 Flight Site Landing Zone Kit \$239.95

360° High Visibility Flashing Beacons and Kits

Features:

- ▶ 360° high-visibility flashing LED beacons
- ▶ Portable, safe, easy-to-use, and cost effective (2 cents/hr.)
- ▶ Bright, clear colors
- ▶ Up to 80 hr. battery life with low battery indicator
- ▶ Tough and dependable with one year limited warranty

Specifications:

- ▶ Beam brightness: 15,000 - 25,000 millicandela
- ▶ Max beam conspicuity: between horizontal and 10° above horizontal
- ▶ Flash rate: 120 flashes per minute
- ▶ Batteries: 2 Alkaline D cells (not included)
- ▶ Battery life: Up to 80 hrs. at full brightness
- ▶ Height: 8" (including optional base)
- ▶ Weight: 1 lb. (including batteries)



Shown with optional base (BE276)



- Shatterproof 360° polycarbonate lens
- Patented Fresnel lens
- Reflective strip and fluoro body
- High-strength clips
- Low battery indicator
- Failsafe positive activation Microswitch
- Advanced Battery Protection System
- Impact-resistant ABS body
- Precision o-rings

Detachable optional base (BE276)

Impact-resistant ABS cap

360° High-Visibility Red Beacon with 8 LED

BE275	Red Beacon with Low Battery Indicator	\$48.95
BE276	Rubber Base	\$3.95

BE277 Includes:

- ▶ 4 amber beacons
- ▶ 1 blue beacon
- ▶ Storage bag
- ▶ 5 rubber bases
- ▶ Laminated instruction card

Helicopter Landing Zone Kit with 5 LED Flashing Beacons

BE277	4 Amber Beacons and 1 Blue Beacon	\$269.95
-------	-----------------------------------	----------



BE277

ABC Fire Extinguishers

Easy-to-use and maintain. Specially fluidized and siliconized mono ammonium phosphate dry chemical. Insulates Class A fires and coats the surface to which it is applied. Smothers and breaks the chain reaction of Class B fires. Bar coded labels. Electrically non-conductive. Bracket included.



Cat#	Size	UL Rating	Valve	Application	Bracket	Price
P614	2 1/2 lbs.	1A:10B:C	Alum.	Nozzle	Wall/Vehicle	\$39.95
P615	5 lbs.	2A:10B:C	Alum.	Hose & Nozzle	Wall/Vehicle	\$58.95
AF557	5 lbs.	2A:10B:C	Brass	Hose & Nozzle	Wall	\$72.95
AF553	5 lbs.	3A:40B:C	Alum.	Hose & Nozzle	Wall/Vehicle	\$55.95
AF554	10 lbs.	4A:80B:C	Alum.	Hose & Nozzle	Wall	\$89.95
AF558	10 lbs.	4A:80B:C	Brass	Hose & Nozzle	Wall	\$103.95
AF555	20 lbs.	20A:120B:C	Alum.	Hose & Nozzle	Wall	\$150.95
J559	20 lbs.	20A:120B:C	Brass	Hose & Nozzle	Wall	\$172.95

Carbon Dioxide Extinguishers

Discharges a white cloud of "snow" which smothers a fire by eliminating its oxygen. Effective for Class B flammable liquid fires and is electrically non-conductive. Aluminum cylinder. Bracket included.



Cat#	Size	UL Rating	Valve	Application	Bracket	Price
H790	5 lbs.	5B:C	Brass	Horn	Wall	\$155.95
H791	10 lbs.	10B:C	Brass	Hose and Horn	Wall	\$236.95
H792	15 lbs.	10B:C	Brass	Hose and Horn	Wall	\$267.95
H793	20 lbs.	10B:C	Brass	Hose and Horn	Wall	\$331.95

Peerless Pump Type Water Extinguishers

Rated 2A, the Peerless Pump Type Water Extinguishers can be filled while in use and are simple-to-operate. You can test it without loss of water by directing the stream back into the tank. The operator controls the discharge. Moving parts made of corrosion-resistant brass and copper. Immediate operation; no priming needed.



2 1/2 Gallon Size

AF577	Polished Copper	\$401.95
R588	Chrome Plated Copper	\$392.95
R587	Red Enamel Copper	\$320.95
H897	Red Enamel Steel	\$285.95
R589	Vehicle Bracket	\$156.95

5 Gallon Size

AF578	Polished Copper	\$426.95
R591	Chrome Plated Copper	\$415.95
R590	Red Enamel Copper	\$371.95
H798	Red Enamel Steel	\$283.95
R592	Vehicle Bracket	\$156.95

Class D Fire Extinguishers

Safest unit on the market, with long hose and wand reach for operating safely. OSHA requires this type of extinguisher in manufacturing areas. **Sodium Chloride** based is specially designed to be used on burning metals, such as magnesium, sodium, potassium, sodium-potassium alloys, uranium and powdered aluminum. **Copper Agent** based is specially designed for use on lithium and lithium alloy fires. 30 lbs., hose & applicator. Wall bracket included.



AF559	Sodium Chloride	\$438.95
AF560	Copper Agent	\$720.95

Water & Foam Stored Pressure Extinguishers

Easy-to-use, maintain and service. Stainless steel cylinders, chrome-plated brass valve, and bar coded labels.

Water Extinguisher: utilizes the cooling, soaking and penetrating effect of 45-55 ft. stream of water for Class A fires. Optional loaded stream/anti-freeze charge protects from freezing.

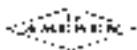
Foam Extinguisher: uses FFFP foam for Class B fire fighting capability. Bracket included. Ship. wt. 9 lbs.

Options

AF579	Water Conditioner, 1 1/2 oz. bottle	\$5.95
BA180	Loaded Stream/Anti-Freeze Charge	\$56.95
AF581	FFFP Foam Refill	\$36.95

Cat#	Type	Size	UL Rating	Application	Bracket	Price
H795	Water	2 1/2 gal.	2A	Hose & Nozzle Hose & Air	Wall	\$111.95
AF580	FFFP	2 1/2 gal.	3A:20B	Aspirating Nozzle	Wall	\$180.95





Halotron I Clean Agent For A, B & C Fires

The most broadly tested and approved 1211 replacement product available that's safe, environmentally friendly, effective and easy-to-use! Halotron is a clean fire extinguishing agent that is discharged as a precisely dispersed rapid evaporation liquid. It performs in a manner similar to Halon 1211 but leaves no residue and is effective against Class A, B and C fires. The primary extinguishing mechanism is the absorption and removal of heat from the combustion zone. Halotron utilizes an HCFC (HydroChloro-Fluorocarbon), non-conductive based agent pressurized with argon. What's more, the Ozone Depletion Potential (ODP) is nearly zero; that's twelve times lower than the EPA maximum. Each extinguisher has a bar coded label for documenting location, inspection, repair, etc. Ideal for use on electrical equipment, computers, vehicles, laboratories and aircraft rescue firefighting. *EPA, FAA, U.S. Coast Guard, NFPA approved. Bracket included.*

Cat#	Size	UL Rating	Valve	Application	Bracket	Price
AR089	1.4 lbs.	1B:C	Alum.	Nozzle	Wall/Vehicle	\$100.95
AR090	2.5 lbs.	2B:C	Alum.	Nozzle	Wall/Vehicle	\$110.95
AR091	5 lbs.	5B:C	Alum.	Nozzle	Wall/Vehicle	\$178.95
AR092	11 lbs.	1A:10B:C	Brass	Hose & Nozzle	Wall	\$374.95
AR093	15.5 lbs.	2A10B:C	Brass	Hose & Nozzle	Wall	\$539.95

Regular B:C Fire Extinguishers

Siliconized sodium bicarbonate based dry chemical, with free-flowing and non-caking additives. Smothers fires in flammable liquids and pressurized gases and is electrically non-conductive. Bar coded labels. *Bracket included.*

Cat#	Size	UL Rating	Valve	Application	Bracket	Price
S255	2½ lbs.	10B:C	Alum.	Nozzle	Wall/Vehicle	\$37.95
S256	5 lbs.	10B:C	Alum.	Nozzle	Wall/Vehicle	\$49.95
AF568	6 lbs.	40B:C	Brass	Hose & Nozzle	Wall	\$74.95
AF566	10 lbs.	60B:C	Alum.	Hose & Nozzle	Wall	\$77.95
H782	10 lbs.	60B:C	Brass	Hose & Nozzle	Wall	\$91.95
AF567	20 lbs.	120B:C	Alum.	Hose & Nozzle	Wall	\$125.95
H783	20 lbs.	120B:C	Brass	Hose & Nozzle	Wall	\$139.95



Purple K B:C Potassium Bicarbonate Extinguishers

Specially fluidized and siliconized potassium bicarbonate dry chemical, effective on flammable liquids and pressurized gases and is electrically non-conductive. Bar coded labels. *Bracket included.*

Cat#	Size	UL Rating	Valve	Application	Bracket	Price
AF569	2½ lbs.	10B:C	Alum.	Nozzle	Wall/Vehicle	\$44.95
AF570	5 lbs.	30B:C	Alum.	Hose & Nozzle	Wall/Vehicle	\$58.95
AF572	10 lbs.	80B:C	Brass	Hose & Nozzle	Wall	\$99.95
AF571	20 lbs.	120B:C	Alum.	Hose & Nozzle	Wall	\$146.95
AF573	20 lbs.	120B:C	Brass	Hose & Nozzle	Wall	\$165.95



Extinguisher Chemical Refill

90% or more active firefighting agents

Made to recharge your fire extinguisher. Manufactured to rigid quality specifications to assure high-performance and superior flow characteristics. *Ship wt. 50 lbs.*

Cat#	Type	Chemical	Price
AF561	ABC	Monoammonium Phosphate	\$181.95
AF562	BC Reg.	Sodium Bicarbonate	\$58.95
AF563	BC Purple K	Potassium Bicarbonate	\$120.95



Extinguisher Vinyl Covers

- ▶ Discourage tampering
- ▶ Vinyl coated cover
- ▶ Bright red color
- ▶ Velcro® closure
- ▶ Fits 5 to 10 lb. D.C. extinguisher
- ▶ Dimensions: 12½" x 20"



P854	Extinguisher Cover	\$9.95
------	--------------------	--------

Heavy-Duty Extinguisher Brackets

Brackets listed below are for Amerex extinguishers, but will fit any other extinguisher with same size cylinder. If you are unsure or are in need of a bracket not listed, please call your Darley representative.



Type	Size	Rating	AF868 \$10.95	AF863 \$40.95	AF864 \$46.95
Halotron	5 lbs.	5B:C	X		
CO2	5 lbs.	5B:C		X	
CO2	10 lbs.	10B:C			X
CO2	15 lbs.	10B:C			X
ABC	5 lbs.	2A:10B:C	X		
ABC	5 lbs.	3A:40B:C	X		
ABC	10 lbs.	4A:60B:C		X	
ABC	20 lbs.	20A:120B:C			X
BC	5 lbs.	10B:C	X		
BC	6 lbs.	40B:C		X	
BC	10 lbs.	60B:C		X	
BC	20 lbs.	120B:C			X
Purple K	5 lbs.	30B:C	X		
Purple K	10 lbs.	80B:C		X	
Purple K	20 lbs.	120B:C			X
Water	2.5 gal.	2A			X
Foam	2.5 gal.	3A:20B			X

Extinguisher Cabinets



Cat#	Description	Size	Price
BB020	Red/Black Extinguisher Cabinets	26"Hx9"Wx9"D	\$123.95
BB021	Red/Black Extinguisher Cabinets	27 1/2"Hx10"Wx8 1/2"D	\$168.95
BB022	Red/Black Extinguisher Cabinets	27 1/2"Hx22 1/2"Wx9"D	\$303.95
BB023	Extinguisher Cabinets	32 1/2"Hx12 1/2"Wx10 1/2"D	\$204.95
BB024	Extinguisher Cabinets	23"Hx7 1/2"Wx7 1/2"D	\$104.95



Universal Vehicle Extinguisher Bracket

Universal brackets have heavy-duty steel back with weather & scratch resistant polyurethane enamel paint finish. Large rubber grommets on bracket back cushion cylinder while strong securing cords keep the cylinder in place. Securing cords easily attach for either left or right hand closings and are impervious to extreme temperatures. There are no moving metal parts to break, loosen or wear out and the bracket is adjustable to several cylinder sizes. *Ship. wt. 3 lbs.*

Cat#	Description	Price
AF869	Bracket for 2 1/2 & 5 lb. Dry Chemical Extinguishers	\$26.95
AF870	Bracket for 6 and 10 lb. Dry Chemical Extinguishers, 5 lb. CO ₂ Extinguishers, 11 & 15.5 lb. Halotron 1 Extinguishers	\$27.95
AF871	Bracket for 20 lb. Dry Chemical Extinguisher, 2 1/2 gal. water extinguisher, 15 & 20 lb. and CO ₂ Extinguishers	\$33.95

Dry Chemical Wheeled Fire Extinguisher

- ▶ Brass, chrome-plated operating valve
- ▶ 240 PSI operating pressure
- ▶ Heavy-duty steel cylinder, carriage and hose hanger assembly
- ▶ Quick-release 25 ft. discharge hose with brass/chrome-plated ball type shut-off nozzle
- ▶ Large color coded Mylar instruction labels
- ▶ "Ultra" corrosion-resistant red polyurethane paint finish
- ▶ Smooth rolling 12 1/2" semi-pneumatic rubber-tired wheels
- ▶ DOT 4BW240 agent cylinder
- ▶ Operating temp; -40°F to +120°F
- ▶ U.S. Coast Guard Approved

edarley.com
Shop online for more extinguishers at edarley.com/extinguishers

Cat#	Agent	UL Rating	Capacity	Hose Length	Hose Dia.	Price
AF582	ABC	30A:160B:C	50 lbs.	25 ft.	1/2"	\$1,226.95
AF583	Regular	160B:C	50 lbs.	25 ft.	1/2"	\$1,178.95
AF584	Purple K	160B:C	50 lbs.	25 ft.	1/2"	\$1,192.95
AF585	ABC	40A:240B:C	125 lbs.	50 ft.	3/4"	\$2,178.95
AF586	Regular	240B:C	150 lbs.	50 ft.	3/4"	\$2,199.95
AF587	Purple K	320B:C	125 lbs.	50 ft.	3/4"	\$2,199.95
AF598	Carbon Dioxide	20B:C	100 lbs.	40 ft.	1/4"	\$3,220.95



Other styles available. Call your Darley representative for information and pricing.